




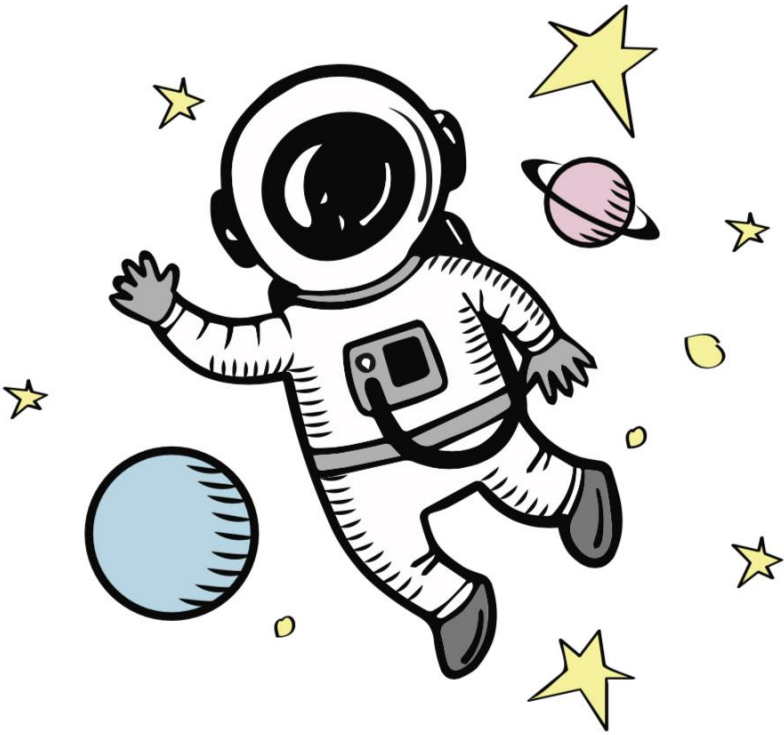


INTENSIVE B2B COURSE SCHEDULE

B2B INTENSIVE COURSE DATES: 15 OCTOBER – 16 OCTOBER 2021

 2021			
DATE	COURSE CONTENT	TIMES	CHECK LIST
1 WEEK BEFORE INTENSIVE DATE	ACCESS TO ONLINE PLATFORM MY COURSE SECTION 01, 02 AND 03		<ul style="list-style-type: none"> • PRINT LOG SHEETS • GET A REBOUNDER READY
PRINTED THEORY AND PRACTICAL MANUALS WILL BE RECEIVED AT THE  HOST STUDIO.			
FRIDAY 15 OCTOBER 2021	COURSE INTRODUCTION:	12:00 GMT+2	ONLINE ORIENTATION
	MODULE 1:	13:00 GMT+2	BASELINE OF BOUND TO BOUNCE
	BREAK	14:00 GMT+2	
	MODULE 2:	14:30 GMT+2	<i>ALL ABOUT THAT GRACE PART A THEORY DISCUSSION</i>
	BREAK	15:30 GMT+2	
	MODULE 3:	16:00 GMT+2	<i>ALL ABOUT THAT GRACE PART B THEORY DISCUSSION</i>
	BREAK	17:00 GMT+2	
	MODULE 4:	17:30 GMT+2	<i>ALL ABOUT THAT GRACE PART C THEORY DISCUSSION</i>
	<i>FINISHED BY:</i>	18:30 GMT+2	
SATURDAY 16 OCTOBER 2021	MODULE 5:	9:00 GMT+2	<i>ALL ABOUT THAT SPACE PART A INTERACTIVE PRACTICE AND DISCUSSION</i>
	BREAK	10:00 GMT+2	
	MODULE 6:	10:30 GMT+2	<i>ALL ABOUT THAT SPACE PART B INTERACTIVE PRACTICE AND DISCUSSION</i>

	BREAK	11:30 GMT+2	
	MODULE 7:	12:00 GMT+2	<i>ALL ABOUT THAT SPACE PART C</i> INTERACTIVE PRACTICE AND DISCUSSION
	LUNCH BREAK	13:00 GMT+2	
	MODULE 8:	14:00 GMT+2	INTERACTIVE PRACTICE AND DISCUSSION Q&A
	BREAK	15:00 GMT+2	
	MODULE 9:	15:30 GMT+2	INTERACTIVE PRACTICE AND DISCUSSION Q&A
	<i>FINISHED BY:</i>	17:00 GMT+2	
<i>SUGGESTED DATE FOR ALL COURSE REQUIREMENTS TO BE COMPLETED: END OF APRIL 2022</i>			
PRACTICAL EXAM VIDEO + FINAL THEORY EXAM + ALL LOG HOURS			



Looking forward to meet you!